

## Topsy Turvy Quilt Pattern

For each block you will need one 6" square and 3 1/2" strips. If you want the same color for all sides of the block, you will need one 3 1/2" strip cut the width of the fabric.'

Sew the strips on the 4 sides of the 6" square. No need to worry about seam allowances since the blocks will be cut after sewing the strips onto the center square.

You can also vary the strip colors, use all prints, already pieced blocks, etc., - just use your imagination!



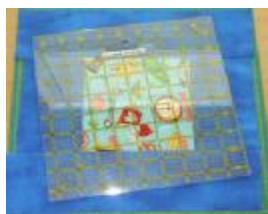
If you're not using borders which we usually don't, the quilt setting is 5 across - 7 down.

There weren't enough blocks available for the quilts pictured below for the 5 across, 7 down setting.



We sometimes use 6" blocks that have been colored and then use prints for the strips. You can vary this pattern in so many ways.

### Instructions for Making a Block a Topsy Turvy Block



Place 9 1/2" ruler diagonally on block. Be sure all 4 corners of the ruler are on the block and that none of the ruler corners are on a seam.

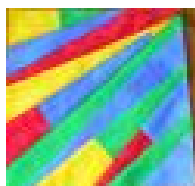
For added interest, don't always lay the ruler at the same angle. See Blue & Brown Quilt to the right for an example.

Edges cut and removed from the quilt block.

Yes, there is some waste. However, you can use the leftover pieces for string piecing. See picture below of string pieced block made from the scraps.



Finished block with edges removed.



String pieced block